

TECHNICAL SPECIFICATION

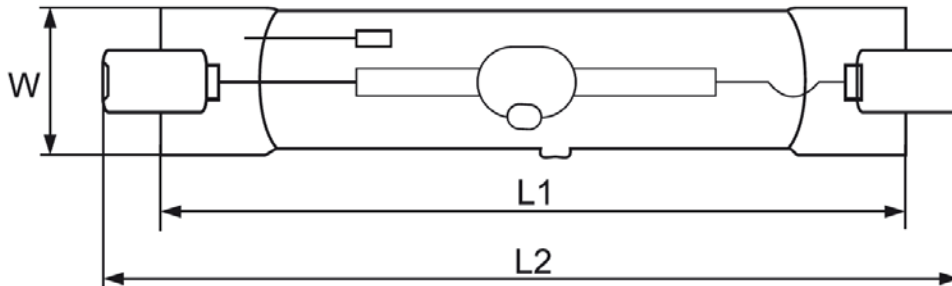
Metal Halide Lamps Rx7s GR



Technical data

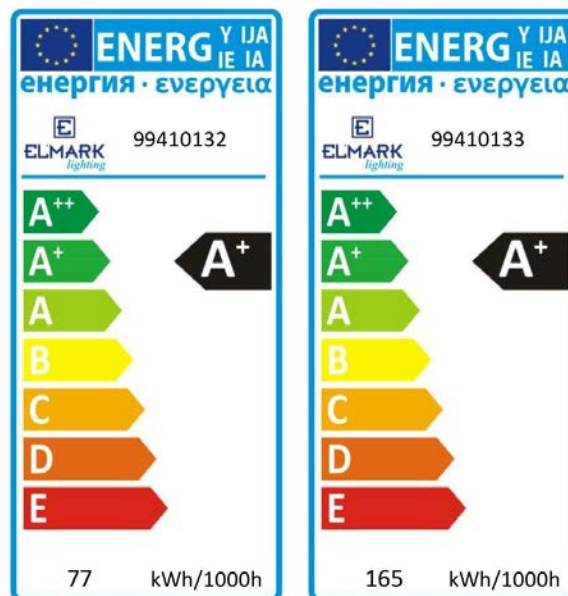
- Power supply: Control gear
- Power: 70W; 150W
- Colour: green
 - Rated LLMF at 2,000h: 0.92
 - Rated LLMF at 4,000h: 0.90
 - Rated LLMF at 6,000h: 0.85
 - Rated LLMF at 8,000h: 0.78
 - Rated LLMF at 10,000h: 0.73
- Base (standard designation): Rx7s
- Average lifetime: 10000h
 - Rated lamp survival factor at 2,000h: 0.95
 - Rated lamp survival factor at 4,000h: 0.90
 - Rated lamp survival factor at 6,000h: 0.85
 - Rated lamp survival factor at 8,000h: 0.80
 - Rated lamp survival factor at 10,000h: 0.60
- Lamp mercury content: max. 10.6mg / 12.3mg
- Dimmable: No

Variants and dimensions



Watt	Colour	Current (A)	Nominal voltage (V)	Ignition Voltage (kV)	Cp μ F	Size (mm)			Catalogue number	Packing (pcs)
						L1	L2	W		
70W	green	0.95	93	3.6 ÷ 5	12	104	117	20	99410132	20
150W	green	1.80	95	3.6 ÷ 5	25	121	134	24	99410133	20

Energy efficiency



Barcodes

Barcode	Catalogue number
3800131163929	99410132
3800131163936	99410133

Standards

EN55015

EN61547

EN61167

EN62035

EN62321

